

KLIMA-FLEX 1 ROLLER CAMS



Stainless steel 304 roller cams for Klima-flex 1. The Klima-flex system is designed for quick and easy mounting. Roller cams reduces the friction in the latching operation and increase the gasket compression.

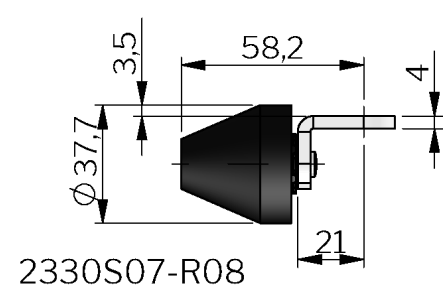
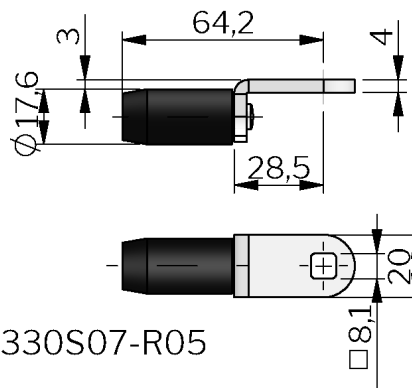
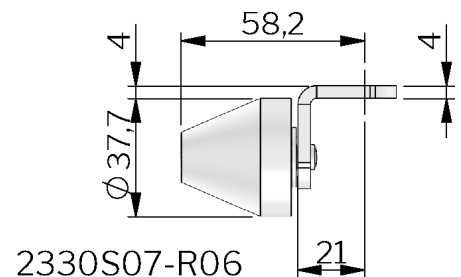
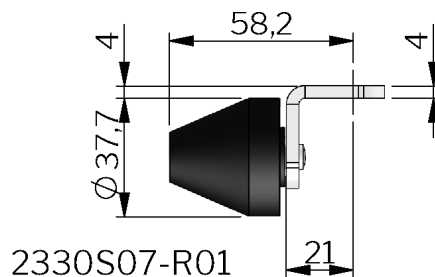


MATERIAL

Roller cam: Stainless steel 304 and glass fibre reinforced Polyamide (PA6GF30), black, or stainless steel

TECHNICAL INFORMATION

Standards: VDI 6022



P/N	Description	For locking unit
2330S07-R01	Roller cam, roller in PA6	All
2330S07-R05	Roller cam, roller in PA6	All
2330S07-R06	Roller cam, roller in stainless steel (303)	All
2330S07-R08	Roller cam, roller in PA6	All